



OZSoft Consulting Corporation
<http://www.ozsoft-consulting.com>

SAP Management Pack for Microsoft System Center Operations Manager 2007

Release Notes

Version 1.0.4 October 21, 2008

Contents

About this publication..... 3

What’s new 3

 Management Pack Configuration Utility SAP Connection Test 3

What’s changed 4

 Cosmetic Changes in Management Pack Configuration Utility 4

Corrected problems 4

Open issues and resolutions 5

Installation information 5

Contact Information..... 5

About this publication

These release notes provide information about the enhancements and resolved problems in version 1.0.4 of the OZSoft SAP Management Pack for Microsoft System Center Operations Manager 2007 product. This information supplements and supersedes information in the [Installation, Administration and User's Guide](#).

What's new

This section describes the new SAP Management Pack features provided in this product release.

Management Pack Configuration Utility SAP Connection Test

Now it is possible to test SAP Configuration from the SAP configuration window. This should alleviate the need for running diagnostics after the configuration is saved. You don't have to save the configuration before the test.

The screenshot shows the 'SAP Configuration' dialog box. It contains several input fields for configuration details and a table for SAP connection parameters.

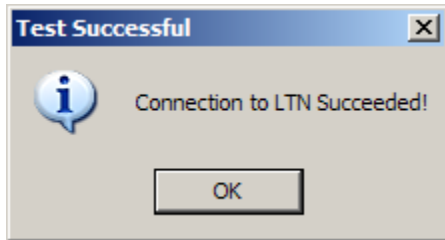
Configuration ID: LTN
Configuration Description: test
CCMS Monitor Set: OZSoft
CCMS Monitor: ITCONDUCTOR

SAP Connection Parameters

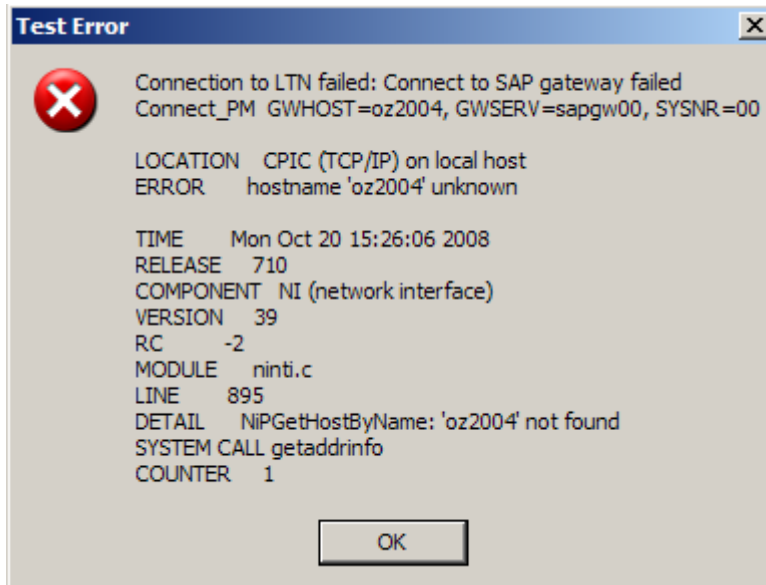
Name	Value
SID	LTN
CLIENT	800
R3NAME	
SYSNR	00
ASHOST	oz2003
MSHOST	
GROUP	
USER	dstaviss
PASSWD	*****

Buttons: OK, Test, Cancel

When all required attributes are filled in the *Test* button becomes enabled. Pressing on the *Test* button initiates a test. If connection is established successfully the following message will appear:



If for some reason the connection fails the message will appear indicating the reason for the failure:



What's changed

This section describes the SAP Management Pack features that have changed in this product release.

Cosmetic Changes in Management Pack Configuration Utility

Several cosmetic changes have been made to the look and feel of the Management Pack Configuration utility.

Corrected problems

The problems listed in Table 1 were reported in earlier releases of SAP Management Pack and have been corrected in this release.

Tracking Number	Description
BMPSAP000112	The License Key is dependent on computer regional configuration profile. If you previously obtained a license key from us please request a replacement. The Auto-generated keys installed as a part of 30-day evaluation are not affected.
BMPSAP000115	SAP Account Password in the Configuration Utility is corrupted if an SAP

Configuration is saved without a password change.

Table 1 Problems corrected in this release

Open issues and resolutions

This section describes issues that remain open in this release. Table 2 lists the tracking numbers.

Tracking Number	Description
WMPSAP000095	There is currently no support for Unicode SAP Systems

Table 2 Open Issues and resolutions in this release

Installation information

For complete installation information, see the [Installation, Administration and User's Guide](#).

Usually when upgrading to the higher version the current configuration, which includes SAP systems connection parameters, is preserved. However we strongly recommend that you back-up the configuration file <Installation Directory> \conf\CONFIG.XML before you start the upgrade. Later you can restore it if the configuration has been lost.

Please note that due to the changes in licensing mechanism, if you have been issued a dedicated license by OZSoft Consulting, you will need to request a replacement.

Contact Information

You can contact OZSoft Consulting at the following web and e-mails addresses:

Technical support: support@ozsoft-consulting.com and <http://www.ozsoft-consulting.com/support>

Sales and Marketing: sales@ozsoft-consulting.com

You can also visit our web site at <http://www.ozsoft-consulting.com> for more information about OZSoft Consulting Corporation, the SAP Performance Management Specialist