



OZSoft Consulting Corporation
<http://www.ozsoft-consulting.com>

SAP Management Pack for Microsoft System Center Operations Manager 2007

Release Notes

Version 1.0.9 October 2, 2009

Contents

About this publication..... 3

What’s new 3

What’s changed 3

 SCOM Maintenance Mode Scheduling per SAP System 3

Corrected problems 5

Open issues and resolutions 5

SAP Notes..... 5

Installation information 5

Contact Information..... 5

About this publication

These release notes provide information about the enhancements and resolved problems in version 1.0.9 of the OZSoft SAP Management Pack for Microsoft System Center Operations Manager 2007 product. This information supplements and supersedes information in the [Installation, Administration and User's Guide](#).

What's new

This section describes the new SAP Management Pack features provided in this product release.

What's changed

SCOM Maintenance Mode Scheduling per SAP System

SAP Management Pack now supports for scheduling of SCOM Maintenance Mode per SAP System.

In order to configure Maintenance Mode Scheduling, first select specific SAP System configuration.

The SAP Configuration window now has tabbed interface.

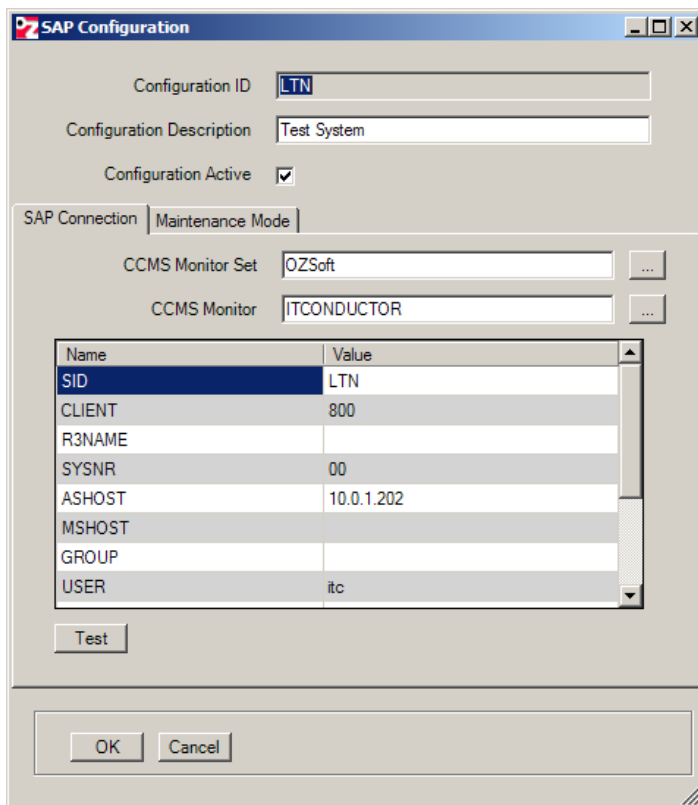


Figure 1 New Tabbed SAP Configuration Window

Switch to **Maintenance Mode** tab.

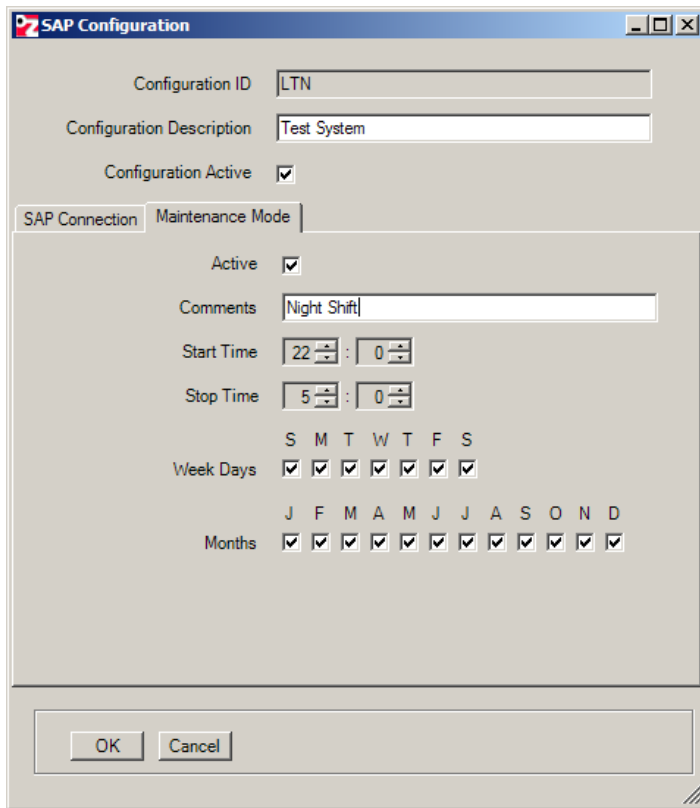


Figure 2 Configuring SCOM Maintenance Mode Scheduling

Enable Maintenance Mode scheduling by checking **Active** checkbox.

Specify **Comments** – this will appear in SCOM Maintenance Mode comments field.

Choose time interval as HH:mm

! **Stop Time** can be “earlier” than **Start Time** in which case it is assumed to be on the next calendar day.

Choose Week Days and Months the Maintenance Mode to be on.

Click **OK** button and **Save** the configuration.

! The Management Pack Connector will try to schedule a Planned Maintenance Mode at the specified time interval for the SAP System Object and all its descendants. If at this time the SAP System Object is already in Maintenance Mode, the connector will try to calculate the required time interval after the current Maintenance Mode is scheduled to end and if necessary schedule Maintenance Mode for the remainder of the time interval.

Corrected problems

The problems listed below were reported in earlier releases of SAP Management Pack and have been corrected in this release.

Tracking Number	Description
	No Resolved Issues in this release

Table 1 Problems corrected in this release

Open issues and resolutions

This section describes issues that remain open in this release. Table 2 lists the tracking numbers.

Tracking Number	Description
	No Open Issues in this release

Table 2 Open Issues and resolutions in this release

SAP Notes

This section describes existing SAP Notes that need to be evaluated and corresponding relevant fixes applied for the Management Pack to function properly. Table 3 lists the numbers and descriptions.

SAP Note Number	Description	SAP Kernel Release Impacted
	No new relevant SAP Notes	

Table 3 SAP Notes

Installation information

For complete installation information, see the [Installation, Administration and User's Guide](#).

Usually when upgrading to the higher version the current configuration, which includes SAP systems connection parameters, is preserved. However we strongly recommend that you back-up the configuration file `<Installation Directory> \conf\CONFIG.XML` before you start the upgrade. Later you can restore it if the configuration has been lost.

There are several cosmetic changes in the management pack file, that include missing descriptions and knowledge articles - there are no functional changes since release 1.0.7.0. The management pack file is located at `<Installation Directory>\scom\OZMP4SAP.mp`.

Contact Information

You can contact OZSoft Consulting at the following web and e-mails addresses:

Technical support: support@ozsoft-consulting.com, <http://www.ozsoft-consulting.com/support> and <http://www.ozsoft-consulting.com/portal> if you have been assigned Support Portal ID

Sales and Marketing: sales@ozsoft-consulting.com

You can also visit our web site at <http://www.ozsoft-consulting.com> for more information about OZSoft Consulting Corporation, the SAP Performance Management Specialist